

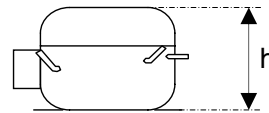
### OPERATION:

Application:	L.B.P.	Max. Ambient Temp:	43°C
Refrigerant:	R134a	(1) Max. Steady Discharge Temp:	120°C
Operation:	Capillary	(1,2) Max. Peak Discharge Temp:	135°C
Cooling:	Static	Max. Steady Condensing Temp:	60°C
		(2) Max. Peak Condensing Temp:	70°C
		Max. Winding Temp:	130°C
		Max. Impurities:	30 mg
		Max.Total Compressor Water Content:	100 mg

### COMPRESSOR:

Displacement:	5.46 cc	Oil Type:	Ester
Bore:	20.88 mm	(4) Viscosity:	15 cSt
Stroke:	15.94 mm	Suction Muffler:	Semi-direct

(3) Net Wt:	9,3 kg
Case Size:	2 (h = 175.5 mm)
Oil Charge:	210 cc



### ELECTRICAL:

Power Supply:	220 - 240V	Motor Type:	RSIR / RSCR *
Voltage Limits:	187 - 264V	Locked Rotor Current:	10.3 / 5.4 A**
Frequency:	50 Hz		
Phase:	1 ph		

Main Winding Resistance at 25°C:	15.4 Ω
Start Winding Resistance at 25°C:	20.6 Ω

\* With Optional Run Capacitor

\*\* Maximum current / Measured after 4 seconds

- (1) Measured 5cm. from the shell with insulated thermocouples
- (2) For transient conditions during 'Pull Down'
- (3) Net weight is with oil but without electrics
- (4) Measured at 40°C

*For rated performance,*

*the suction line must be connected to the stub marked 'AS' on the attached drawing.*

### ELECTRICAL COMPONENTS:

ECC Starting Device:	K 100-xx	<i>-xx Protector short code</i>
Starting Device:	PTC- 8100	UH Starting Device: PTC- 3003-x
(1) Starting Device:	PTC - 7100D0	UH PTC Resistance: 14 Ω
PTC Resistance:	14 Ω	Alt. UH Starting Device: PTC- 3001-x
Run Capacitor:	4.0 μF	<i>-x PTC code for different contact versions</i>

### PROTECTORS:

	BDG ¾	Electrica ¾	SENSATA ¾	SENSATA 4TM
Type	AE 15 BU x	T 0530 / xx	MRP 348LZ xxxx	4TM 276 NFBYY xx
Open °C	115 - 125 °C	105 - 115 °C	115 - 125 °C	115 - 125 °C
Close °C	71 - 53 °C	70 - 52 °C	70 - 52 °C	70 - 52 °C
U.T.C	1.70 A 70 °C	2.22 A 70 °C	2.14 A 70 °C	1.96 A 70 °C
Time Check Current	8.00 A	8.80 A	7.40 A	9.0 A (5-15s)
Max. Current	17.5 A	18.0 A	17.5 A	17.4 A (2s max.)
Code (if any)	FC	AH	TF	6H

Type  
 Open °C  
 Close °C  
 U.T.C  
 Time Check Current  
 Max. Current  
 Code (if any)

Alt. protectors:	AF 15 BU x	MSP 348LZ xxxx
Code (if any)	D0	

*Sensata 'xxxx' Codes: 3201 for terminal boards Mod.89,90  
 3166 for terminal board Mod.91  
 3178 for UH protector with 6.3mm fast-on  
 3175 for UH protector with M3.5 screw*

*Electrica 'x' Codes: 6 for terminal boards Mod.89,90  
 8 for terminal board Mod.91  
 4 for UH protector with 6.3mm fast-on  
 5 for UH protector with M3.5 screw*

*Electrica 'xx' Codes: 74 for terminal boards Mod.89,90  
 26 for terminal board Mod.91  
 24 for UH protector with M3.5 screw  
 25 for UH protector with 6.3mm fast-on*

*Sensata 4TM 'xx' Codes: .. for different contact versions*

*4TM protectors are for use with UH and ECC terminal boards only.*

*Protectors with M 3.5 screws can be used on UH electric housings type SP-1454 (with connection board) and SP-1821 (without connection board). See drawings ELECTRICAL ASSEMBLY (FOR UH) number FTC15;16;17;18.*

*¾ protectors with 6.3mm fast-on can only be used on UH electric housing type SP-1821 (without connection board).*



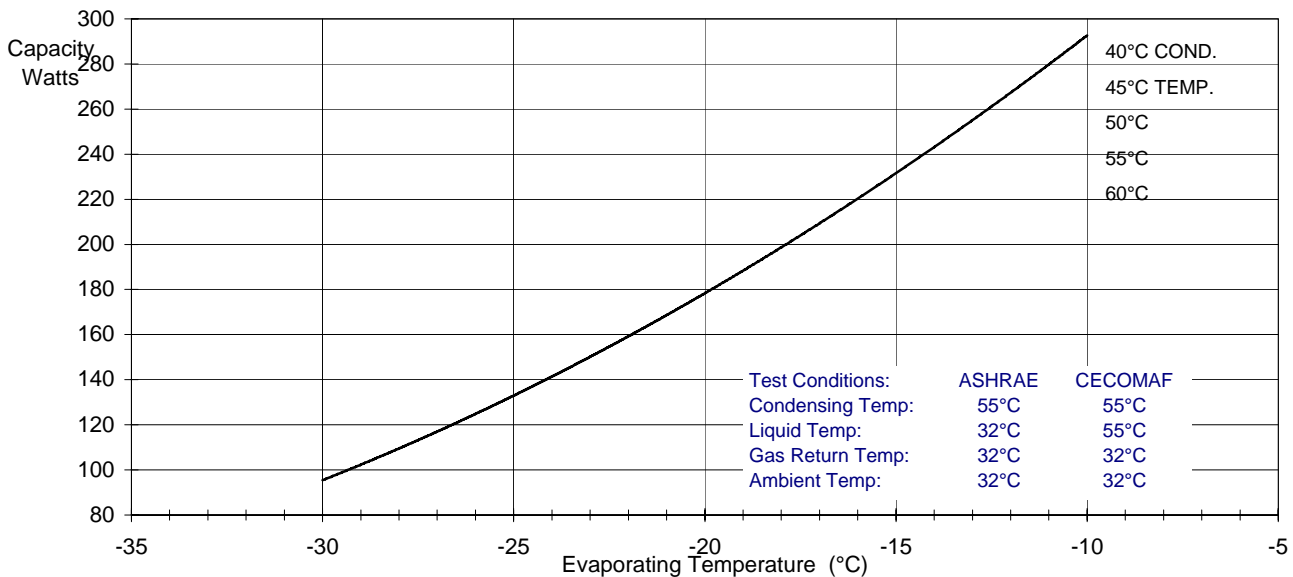
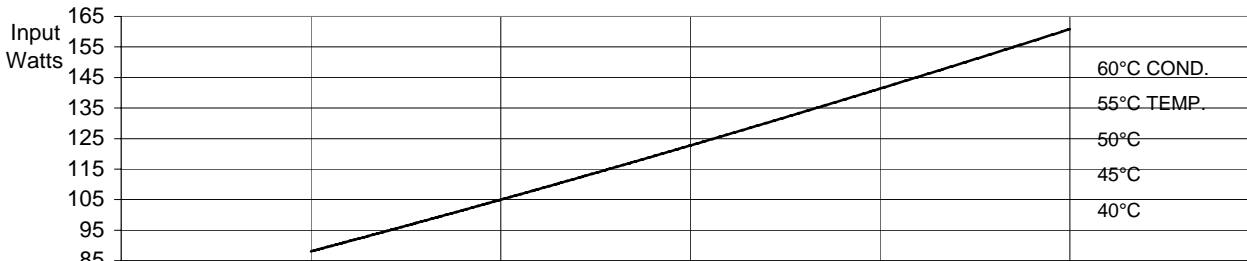
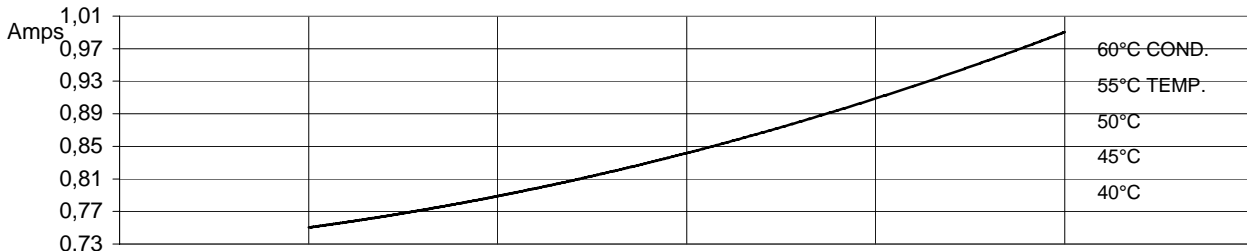
# GQY55AA

## PRODUCT SPECIFICATION

### PERFORMANCE:

(Graphs are at ASHRAE conditions)

220V 50Hz Without run capacitor



Test Conditions:	ASHRAE	CECOMAF
Condensing Temp:	55°C	55°C
Liquid Temp:	32°C	55°C
Gas Return Temp:	32°C	32°C
Ambient Temp:	32°C	32°C

	Evaporating Temperature °C	-30	-25	-23,3	-20	-15	-10
<b>ASHRAE:</b>	Capacity	W	95	134	148	178	231
	C.o.P.	W / W	1,08	1,27	1,33	1,45	1,64
<b>CECOMAF:</b>	Capacity	W	78	109	145	189	239
	C.o.P.	W / W	0,89	1,04	1,18	1,34	1,48
	Input Power	W	88	105	111	123	141
	Current	A	0,75	0,79	0,81	0,84	0,91



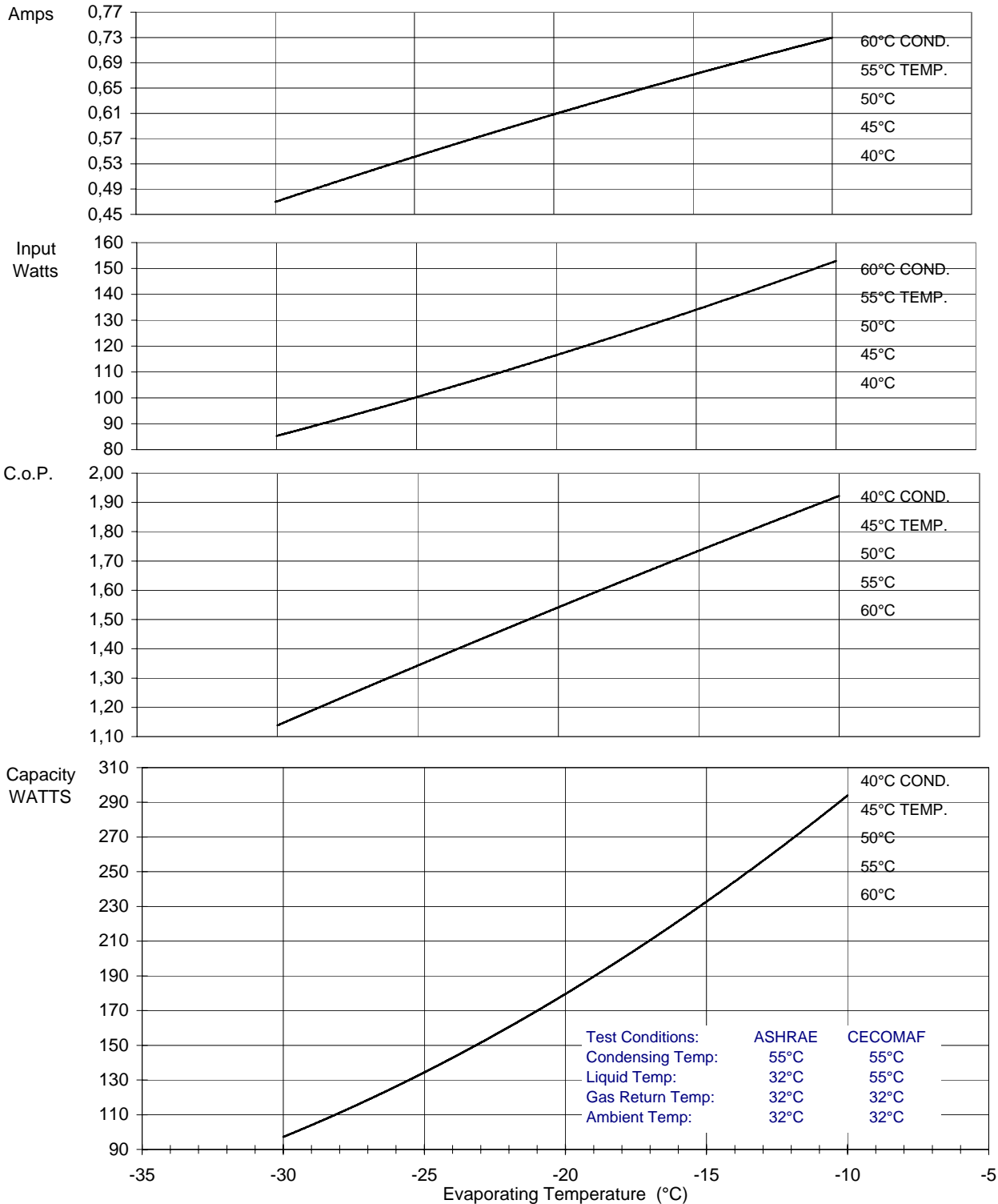
# GQY55AA

## PRODUCT SPECIFICATION

### PERFORMANCE:

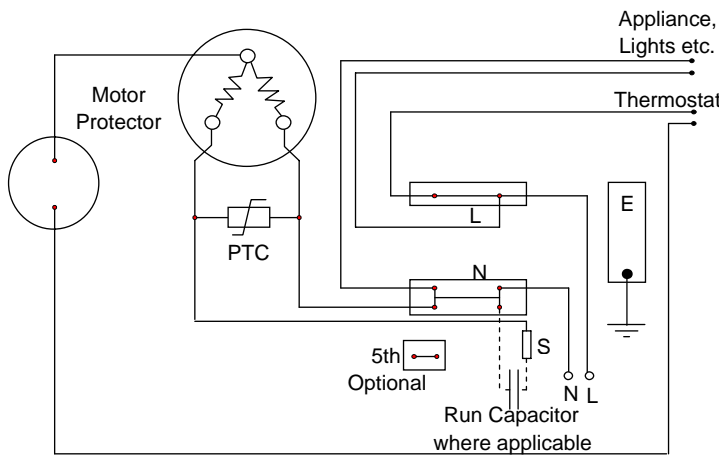
(Graphs are at ASHRAE conditions)

220V 50Hz With run capacitor

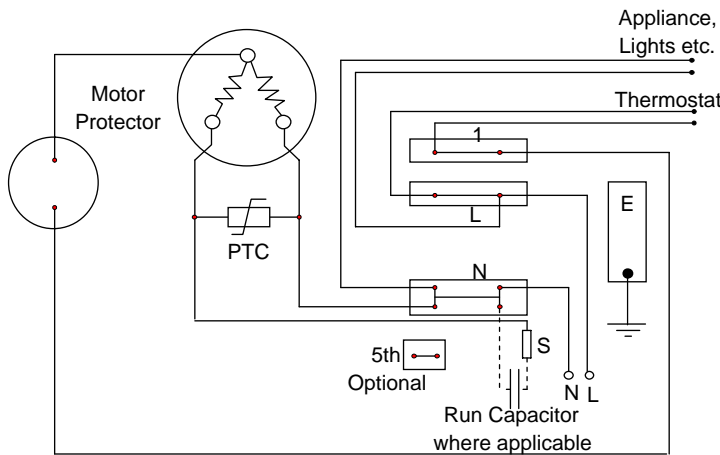


	Evaporating Temperature °C	-30	-25	-23,3	-20	-15	-10
<u>ASHRAE:</u>	Capacity W	97	135	149	179	233	294
	C.o.P. W / W	1,14	1,34	1,41	1,54	1,74	1,92
<u>CECOMAF:</u>	Capacity W	92	128		170	221	278
	C.o.P. W / W	1,08	1,27		1,47	1,65	1,82
	Input Power W	85	101	106	116	134	153
	Current A	0,47	0,54	0,56	0,61	0,67	0,73

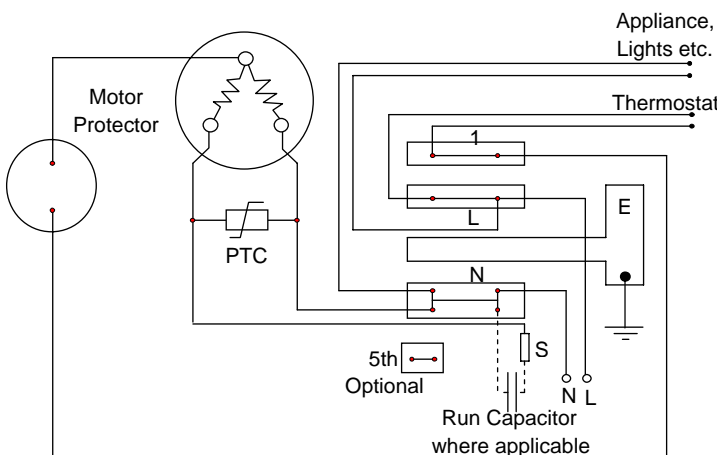
### Circuit Diagram for ECC Terminal Board Standard Version



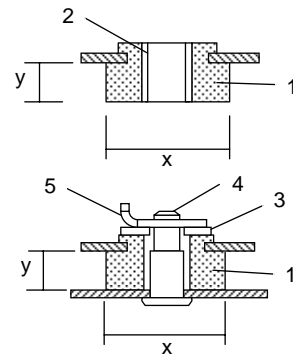
### Circuit Diagram for ECC Terminal Board Frontal Version



### Circuit Diagram for ECC Terminal Board Rast 5 Version



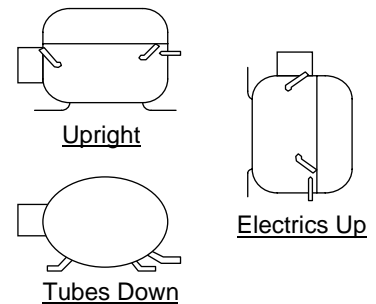
### Mounting Accessories



x = 24 or 26 or 28.6mm  
y = 9mm or 10.3mm  
Other sizes available

1. Rubber grommet
2. Sleeve
3. Washer
4. Steel pin
5. Clip

### Recommended Transport Positions when fitted into appliances



### Compressor Label

